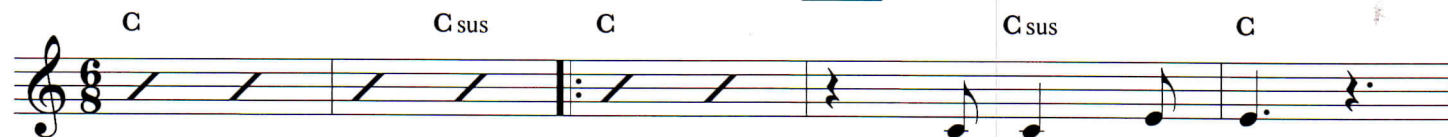


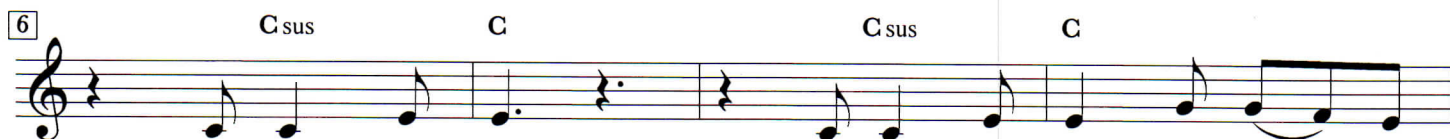
God's Highway

Sandra McCracken

Verse

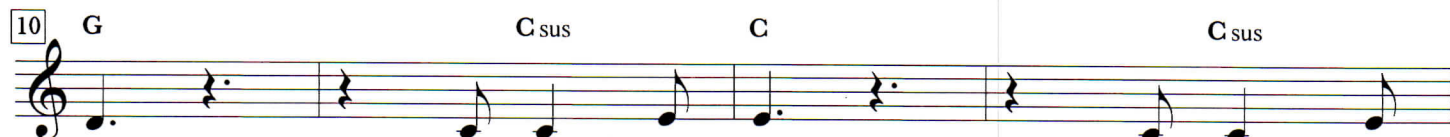


1. My feet are strong,
2. The shadows flee,
3. I see the shore,



my eyes are clear,
the valley's deep,
from troubled seas,

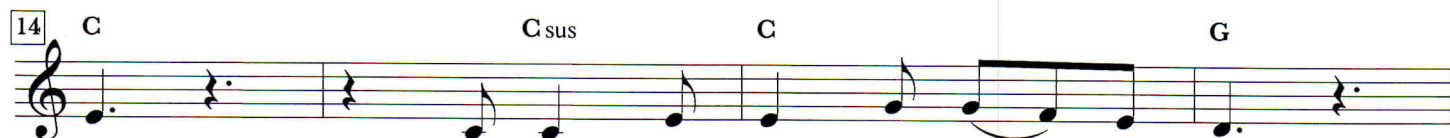
I can - not see the way — from
but e - vil can - not con - quer
this ti - ny ship that ca - rries



here.
me.
me.

But on we go;
Your rod and staff,
It is not yet,

He knows the
they pro - tect
but it will



way,
me.
be.

and in His arms
You give me rest,
So hea - ven come,

He keeps me safe.
you give — me peace.
it's You — we need.

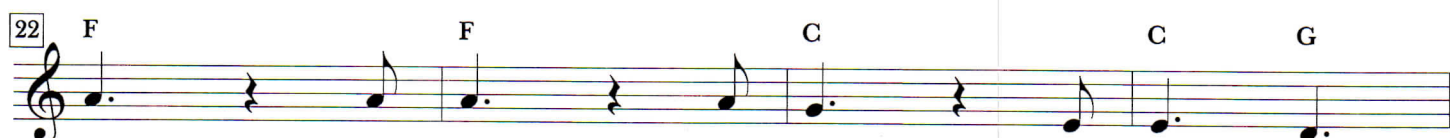
Chorus



Fear not,

keep on,

watch and



pray.

Walk in

the light

of God's

high -

God's Highway, pg. 2 of 2

1, 2, 4. **Fine** 3.

26 C C sus C

way. way. Fear

Chorus

30 F Dm C F

not, keep on, watch and pray. Walk

34 F C C G C

in the light of God's high - way.

Bridge

38 C sus C C sus C

I'm hold - ing

42 C sus C C sus C

on _____ to You, Lord. _____ You're hold - ing

46 C sus C **D.S. al Fine**

on _____ to me.